



Banksia

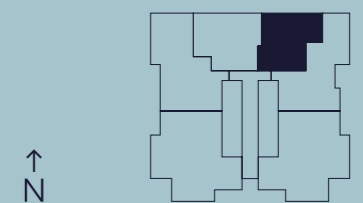
NORWEST QUARTER

Typical 1 Bed Apartment + Study

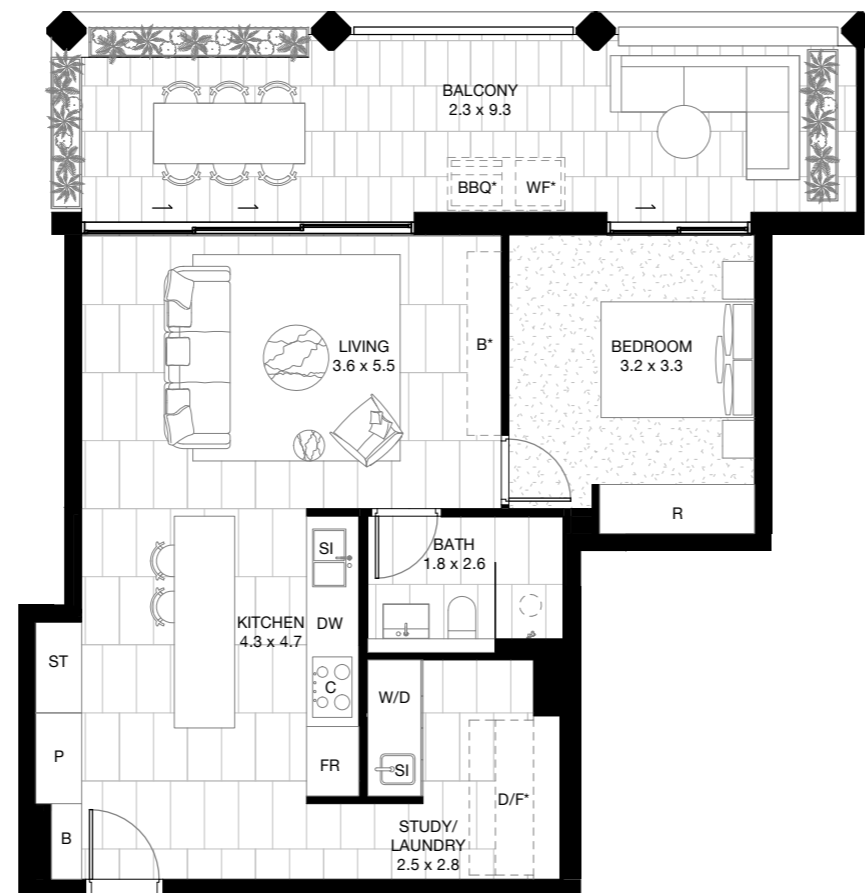


Internal area	65m ²
External area	23m ²
Total area	88m²

PD	Powder Room	FR	Fridge
ST	Store	P	Pantry
DW	Dishwasher	B	Bench
SI	Sink	D/F	Desk/Folding Bed
C	Cooktop	R	Robe
OV	Oven	WIR	Walk in Robe
MW	Microwave	WF	Wine Fridge
W/D	Washing & Dryer	*	Upgrade Item



Disclaimer - The information and illustrations in this document are illustrative only and are subject to the terms of the contract for sale and the draft strata plan in the contract for sale. Although the information and illustrations are, at the date of contract, believed to be correct, this document was prepared prior to construction and the proportions and layout are subject to change. Furniture and fittings depicted are indicative only and purchasers must refer to the contract for sale for the list of inclusions and schedule of finishes. The position of furniture and fittings should not be taken to be indicative of final positions of power points, TV connection points and other amenities. All graphics including the tile layout, balustrade, fencing, timber flooring and decking are indicative only. Layout plans are at an unspecified scale and if any areas or sizes are indicated, they are indicative only as the area of the property sold is as recorded on the draft strata plan. All reasonable care has been taken in the preparation of this floor plan. However, the vendor and its appointed agents disclaim all liability should any information or conveyed by or contained in this document differ from the contract for sale, the draft strata plan or the property or building as constructed.





Banksia

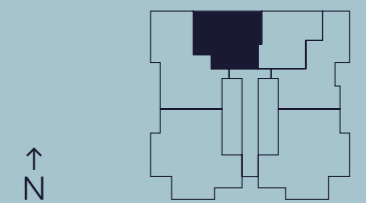
NORWEST QUARTER

Typical 2 Bed Apartment



Internal area	77m ²
External area	16m ²
Total area	93m²

PD	Powder Room	FR	Fridge
ST	Store	P	Pantry
DW	Dishwasher	B	Bench
SI	Sink	D/F	Desk/Folding Bed
C	Cooktop	R	Robe
OV	Oven	WIR	Walk in Robe
MW	Microwave	WF	Wine Fridge
W/D	Washing & Dryer	*	Upgrade Item



Disclaimer - The information and illustrations in this document are illustrative only and are subject to the terms of the contract for sale and the draft strata plan in the contract for sale. Although the information and illustrations are, at the date of contract, believed to be correct, this document was prepared prior to construction and the proportions and layout are subject to change. Furniture and fittings depicted are indicative only and purchasers must refer to the contract for sale for the list of inclusions and schedule of finishes. The position of furniture and fittings should not be taken to be indicative of final positions of power points, TV connection points and other amenities. All graphics including the tile layout, balustrade, fencing, timber flooring and decking are indicative only. Layout plans are at an unspecified scale and if any areas or sizes are indicated, they are indicative only as the area of the property sold is as recorded on the draft strata plan. All reasonable care has been taken in the preparation of this floor plan. However, the vendor and its appointed agents disclaim all liability should any information or conveyed by or contained in this document differ from the contract for sale, the draft strata plan or the property or building as constructed.





Banksia

NORWEST QUARTER

Typical 2 Bed Apartment + Study

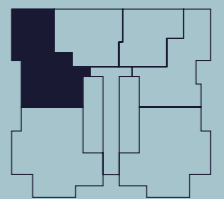


2 2 1 2

Internal area 112m²
External area 15m²

Total area 127m²

PD	Powder Room	FR	Fridge
ST	Store	P	Pantry
DW	Dishwasher	B	Bench
SI	Sink	D/F	Desk/Folding Bed
C	Cooktop	R	Robe
OV	Oven	WIR	Walk in Robe
MW	Microwave	WF	Wine Fridge
W/D	Washing & Dryer	*	Upgrade Item



↑
N

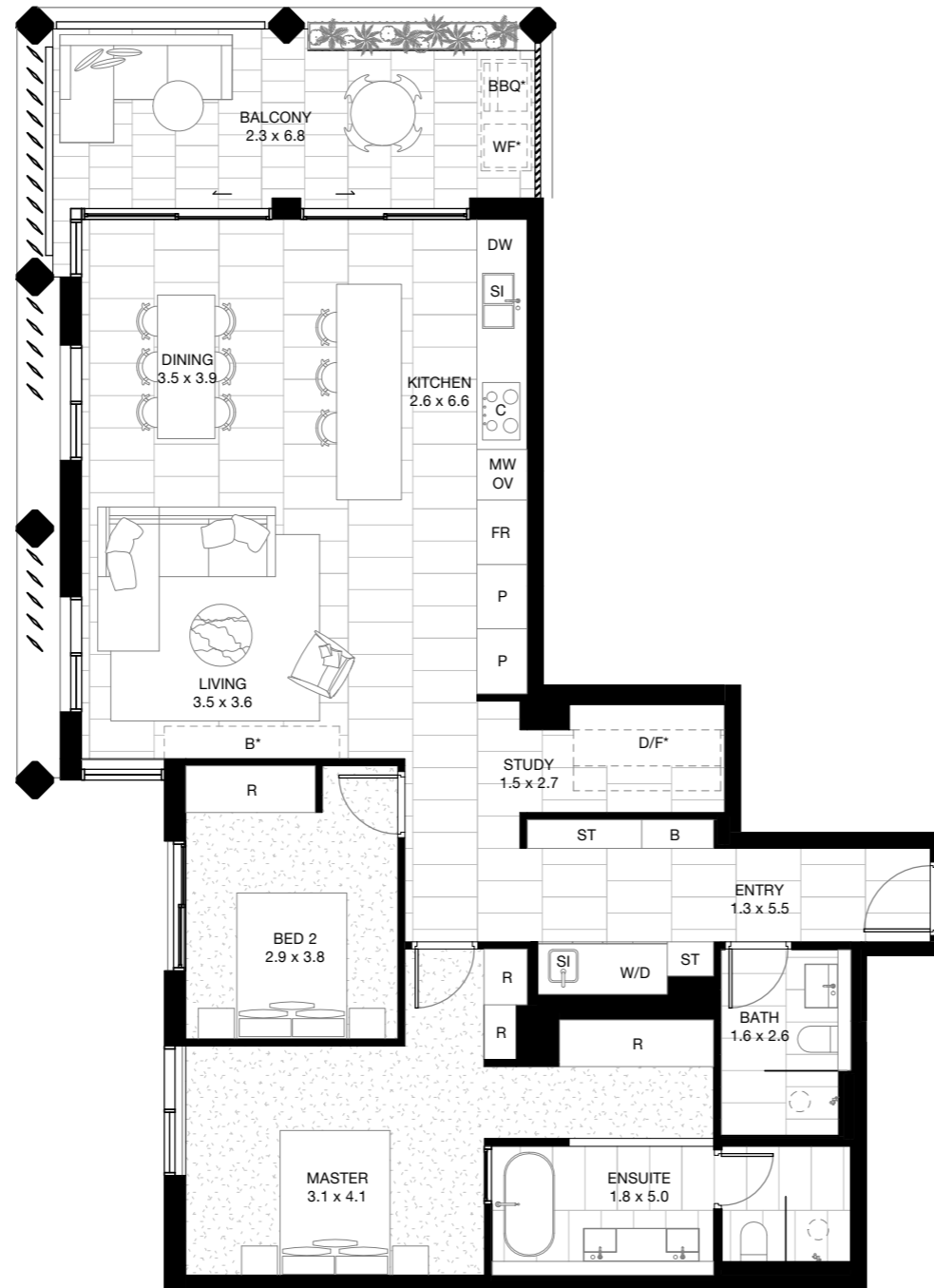


Norwest
feel alive

Disclaimer - The information and illustrations in this document are illustrative only and are subject to the terms of the contract for sale and the draft strata plan in the contract for sale. Although the information and illustrations are, at the date of contract, believed to be correct, this document was prepared prior to construction and the proportions and layout are subject to change. Furniture and fittings depicted are indicative only and purchasers must refer to the contract for sale for the list of inclusions and schedule of finishes. The position of furniture and fittings should not be taken to be indicative of final positions of power points, TV connection points and other amenities. All graphics including the tile layout, balustrade, fencing, timber flooring and decking are indicative only. Layout plans are at an unspecified scale and if any areas or sizes are indicated, they are indicative only as the area of the property sold is as recorded on the draft strata plan. All reasonable care has been taken in the preparation of this floor plan. However, the vendor and its appointed agents disclaim all liability should any information or conveyed by or contained in this document differ from the contract for sale, the draft strata plan or the property or building as constructed.

Version 01

October 2021





Banksia

NORWEST QUARTER

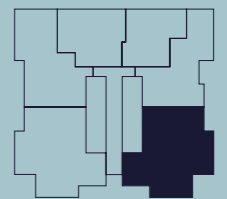
Typical 3 Bed Apartment + Study



Internal area	137m ²
External area	24m ²

Total area 161m²

PD	Powder Room	FR	Fridge
ST	Store	P	Pantry
DW	Dishwasher	B	Bench
SI	Sink	D/F	Desk/Folding Bed
C	Cooktop	R	Robe
OV	Oven	WIR	Walk in Robe
MW	Microwave	WF	Wine Fridge
W/D	Washing & Dryer	*	Upgrade Item



Disclaimer - The information and illustrations in this document are illustrative only and are subject to the terms of the contract for sale and the draft strata plan in the contract for sale. Although the information and illustrations are, at the date of contract, believed to be correct, this document was prepared prior to construction and the proportions and layout are subject to change. Furniture and fittings depicted are indicative only and purchasers must refer to the contract for sale for the list of inclusions and schedule of finishes. The position of furniture and fittings should not be taken to be indicative of final positions of power points, TV connection points and other amenities. All graphics including the tile layout, balustrade, fencing, timber flooring and decking are indicative only. Layout plans are at an unspecified scale and if any areas or sizes are indicated, they are indicative only as the area of the property sold is as recorded on the draft strata plan. All reasonable care has been taken in the preparation of this floor plan. However, the vendor and its appointed agents disclaim all liability should any information or conveyed by or contained in this document differ from the contract for sale, the draft strata plan or the property or building as constructed.

