



Lacebark

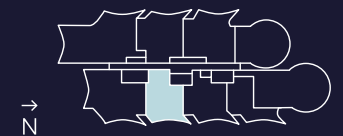
NORWEST QUARTER

Typical 1 Bed Apartment



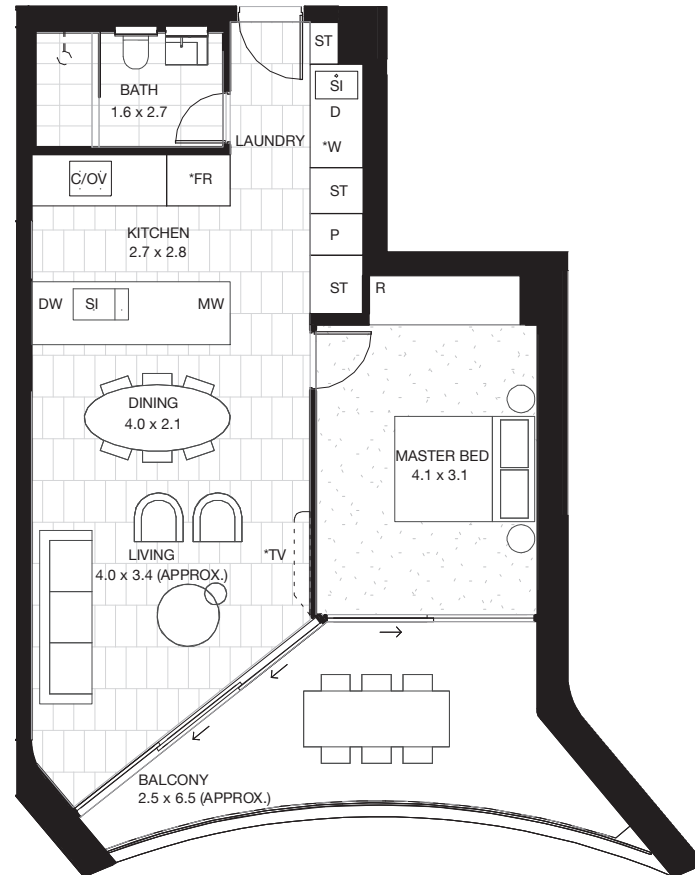
Internal area	58m ²
External area	14m ²
Total area	72m²

PD	Powder Room	FR	Fridge Recess
ST	Store	P	Pantry
DW	Dishwasher	B	Bench
SI	Sink	D/F	Desk/Folding Bed
C	Cooktop	R	Robe
OV	Oven	WIR	Walk in Robe
MW	Microwave	TV	TV Joinery
W	Washer	*	Upgrade Item
D	Dryer		



Norwest
feel alive

Disclaimer - The information and illustrations in this document are illustrative only and are subject to the terms of the contract for sale and the draft strata plan in the contract for sale. Although the information and illustrations are, at the date of contract, believed to be correct, this document was prepared prior to construction and the proportions and layout are subject to change. Furniture and fittings depicted are indicative only and purchasers must refer to the contract for sale for the list of inclusions and schedule of finishes. The position of furniture and fittings should not be taken to be indicative of final positions of power points, TV connection points and other amenities. All graphics including the tile layout, balustrade, fencing, timber flooring and decking are indicative only. Layout plans are at an unspecified scale and if any areas or sizes are indicated, they are indicative only as the area of the property sold is as recorded on the draft strata plan. All reasonable care has been taken in the preparation of this floor plan. However, the vendor and its appointed agents disclaim all liability should any information or conveyed by or contained in this document differ from the contract for sale, the draft strata plan or the property or building as constructed.





Lacebark

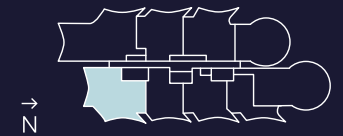
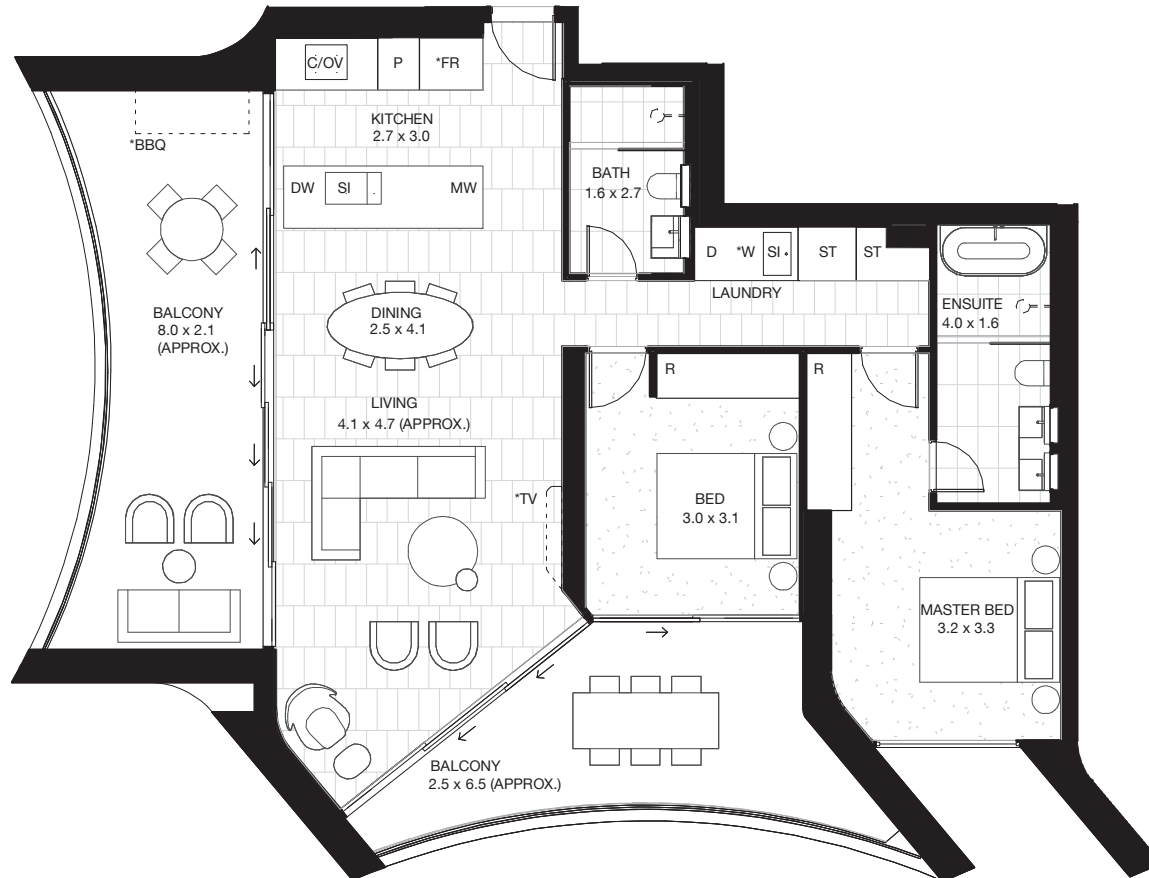
NORWEST QUARTER

Typical 2 Bed Apartment



Internal area	90m ²
External area	34m ²
Total area	124m²

PD	Powder Room	FR	Fridge Recess
ST	Store	P	Pantry
DW	Dishwasher	B	Bench
SI	Sink	D/F	Desk/Folding Bed
C	Cooktop	R	Robe
O	Oven	WIR	Walk in Robe
MW	Microwave	TV	TV Joinery
W	Washer	*	Upgrade Item
D	Dryer		



Norwest
feel alive

Disclaimer - The information and illustrations in this document are illustrative only and are subject to the terms of the contract for sale and the draft strata plan in the contract for sale. Although the information and illustrations are, at the date of contract, believed to be correct, this document was prepared prior to construction and the proportions and layout are subject to change. Furniture and fittings depicted are indicative only and purchasers must refer to the contract for sale for the list of inclusions and schedule of finishes. The position of furniture and fittings should not be taken to be indicative of final positions of power points, TV connection points and other amenities. All graphics including the tile layout, balustrade, fencing, timber flooring and decking are indicative only. Layout plans are at an unspecified scale and if any areas or sizes are indicated, they are indicative only as the area of the property sold is as recorded on the draft strata plan. All reasonable care has been taken in the preparation of this floor plan. However, the vendor and its appointed agents disclaim all liability should any information or conveyed by or contained in this document differ from the contract for sale, the draft strata plan or the property or building as constructed.



Lacebark

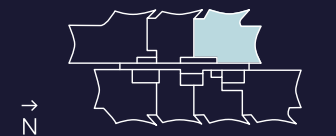
NORWEST QUARTER

Typical 2 Bed Apartment + Study

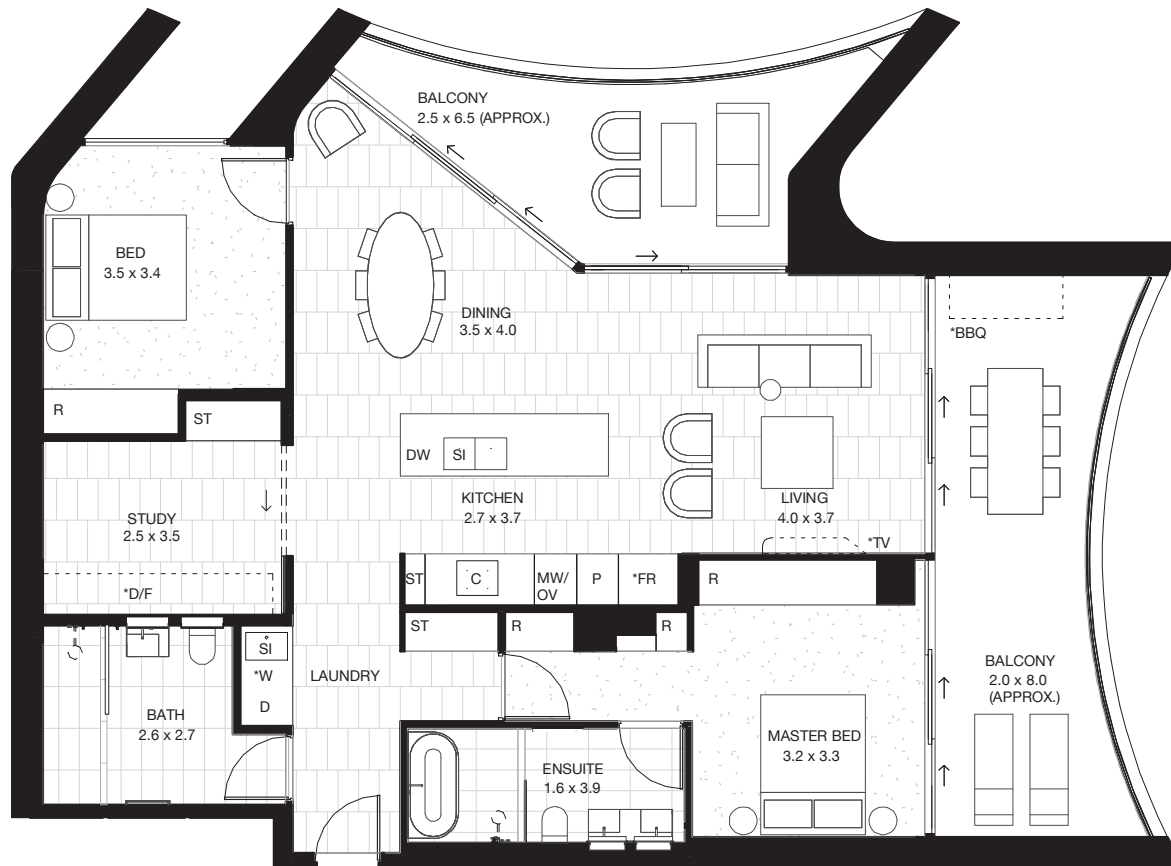


Internal area	115m ²
External area	34m ²
Total area	149m²

PD	Powder Room	FR	Fridge Recess
ST	Store	P	Pantry
DW	Dishwasher	B	Bench
SI	Sink	D/F	Desk/Folding Bed
C	Cooktop	R	Robe
OV	Oven	WIR	Walk in Robe
MW	Microwave	TV	TV Joinery
W	Washer	*	Upgrade Item
D	Dryer		



Disclaimer - The information and illustrations in this document are illustrative only and are subject to the terms of the contract for sale and the draft strata plan in the contract for sale. Although the information and illustrations are, at the date of construction, believed to be correct, this document was prepared prior to construction and the proportions and layout are subject to change. Furniture and fittings depicted are indicative only and purchasers must refer to the contract for sale for the list of inclusions and schedule of finishes. The position of furniture and fittings should not be taken to be indicative of final positions of power points, TV connection points and other amenities. All graphics including the tile layout, balustrade, fencing, timber flooring and decking are indicative only. Layout plans are at an unspecified scale and if any areas or sizes are indicated, they are indicative only as the area of the property sold is as recorded on the draft strata plan. All reasonable care has been taken in the preparation of this floor plan. However, the vendor and its appointed agents disclaim all liability should any information or conveyed by or contained in this document differ from the contract for sale, the draft strata plan or the property or building as constructed.





Lacebark

NORWEST QUARTER

Typical 3 Bed Apartment



3 2 2



Internal area	124m ²
External area	34m ²

Total area	158m²
-------------------	-------------------------

PD	Powder Room	FR	Fridge Recess
ST	Store	P	Pantry
DW	Dishwasher	B	Bench
SI	Sink	D/F	Desk/Folding Bed
C	Cooktop	R	Robe
OV	Oven	WIR	Walk in Robe
MW	Microwave	TV	TV Joinery
W	Washer	*	Upgrade Item
D	Dryer		



Norwest
feel alive

Disclaimer - The information and illustrations in this document are illustrative only and are subject to the terms of the contract for sale and the draft strata plan in the contract for sale. Although the information and illustrations are, at the date of contract, believed to be correct, this document was prepared prior to construction and the proportions and layout are subject to change. Furniture and fittings depicted are indicative only and purchasers must refer to the contract for sale for the list of inclusions and schedule of finishes. The position of furniture and fittings should not be taken to be indicative of final positions of power points, TV connection points and other amenities. All graphics including the tile layout, balustrade, fencing, timber flooring and decking are indicative only. Layout plans are at an unspecified scale and if any areas or sizes are indicated, they are indicative only as the area of the property sold is as recorded on the draft strata plan. All reasonable care has been taken in the preparation of this floor plan. However, the vendor and its appointed agents disclaim all liability should any information or conveyed by or contained in this document differ from the contract for sale, the draft strata plan or the property or building as constructed.